

To apply, email:

inclusion@gowriesa.org.au or
download an application form from
our website below.

A member of the Inclusion Aware team
will then be in contact with you to start
the process.

Is your service

Inclusion Aware?



Contact Us

t 1800 129 606
e inclusion@gowriesa.org.au

Gowrie SA Inclusion Agency
43 Dew Street, Thebarton SA 5031

gowriesa.org.au

Being Inclusion Aware is a component of inclusive practice. This refers to the consistent and considered thought about environments, resources and planning to support the welcoming of children (and families) with a diverse range of abilities, interests and backgrounds.



Gowrie
South Australia

Inclusion Agency

The Inclusion Support Programme is funded by the Australian Government Department of Education and Training

To receive an Inclusion Aware certificate you need to be engaged with the Inclusion Agency, have a current online active Strategic Inclusion Plan and fulfil the criteria below.

Do you want to encourage and promote with your colleagues, families and community?

Have you engaged with the Inclusion Agency through a request for service, and have ongoing support from an Inclusion Professional?

Do you have a Strategic Inclusion Plan that is current and being implemented to support the inclusion of children in your service?

Is your service ready, willing and able to include children with a range of abilities, interests and backgrounds?

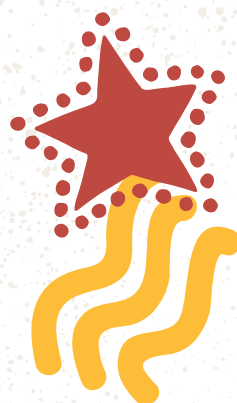
To be certified as Inclusion Aware (Gowrie SA Inclusion Agency) you need to demonstrate with discussions and evidence that you:

Actively facilitate access for all children including modifying practices and the environment to ensure inclusivity of all children.

Link with local agencies and services in the community to build connections and support families.

Acknowledge and value diversity as a resource for learning and growth, representing your community.

Implement culturally responsive practices and environments, and provide services that are flexible.



Our criteria:

Every child is supported to access and participate in programs and learning experiences.

Every child's individual strengths, needs and interests are acknowledged and valued.

Every child has the opportunity and necessary support to participate in activities and routines that maximize their learning potential.

Every child is encouraged and supported to voice their opinions, choices, needs, preferences and feel involved and successful in their learning and play.

Every family is invited to participate in decision making and goal setting for their child.

Every family is acknowledged as being diverse, and their diversity informs the practice of educators.

Every family is invited to contribute to the programming, practice and routines of the service.

The local community is reflected in the demographic of the service.

The local community is invited to share their skills, experiences and local knowledge within the service.

The local community's services are visible in the centre such as community services, health services, and social services.

